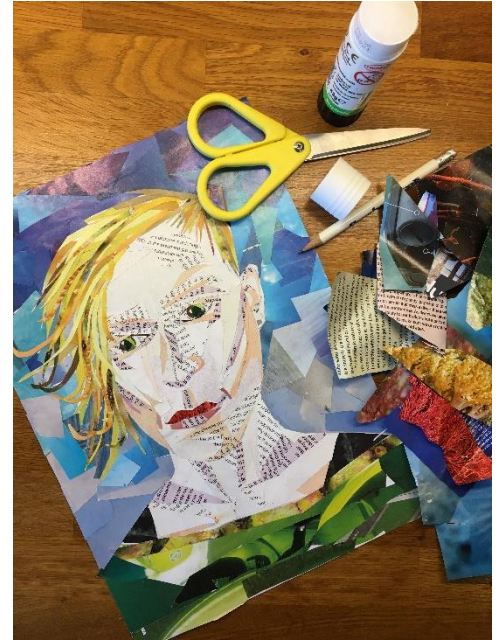


TorreAbbey Create a Collage Portrait!

Below are the instructions for making your own Collage Portrait:

You will need:

- A piece of card or heavyweight paper
- Pencil
- Mirror for self-portrait (or a photograph of yourself or someone else if you prefer)
- Old magazines and newspapers
- Scissors
- Glue stick



How to create your collage portrait:

1. Use a mirror to study yourself (or look at your partner or a photograph of someone) and take note of the shapes, shadows, colours and contours of your/their face, hair and features. These features will be simplified so think in large blocks of shape, colour and shade.
2. Sketch yourself or your portrait outline on your piece of paper or card. Use large shapes rather than too much detail.
3. Collect together your magazines and newspapers - find and cut out pieces and shapes from the pages that include the colours of your skin, hair, eyes and clothes. Also cut out text as this can also be added to your image.
4. Arrange your cut out shapes on the paper over the pencil sketch, overlapping the pieces to create texture and shade and to cover the paper underneath.
5. Use a glue stick to fix your paper shapes into position, working to the edges to fill the paper completely. Add detail with a pen to add highlights if you wish.

We would love to see your creations!

Please share your images with us at Torre Abbey.

To discuss a visit or connection with Torre Abbey, please email kate.linden@torbay.gov.uk or abbeylearning@torbay.gov.uk or call 07827 986125